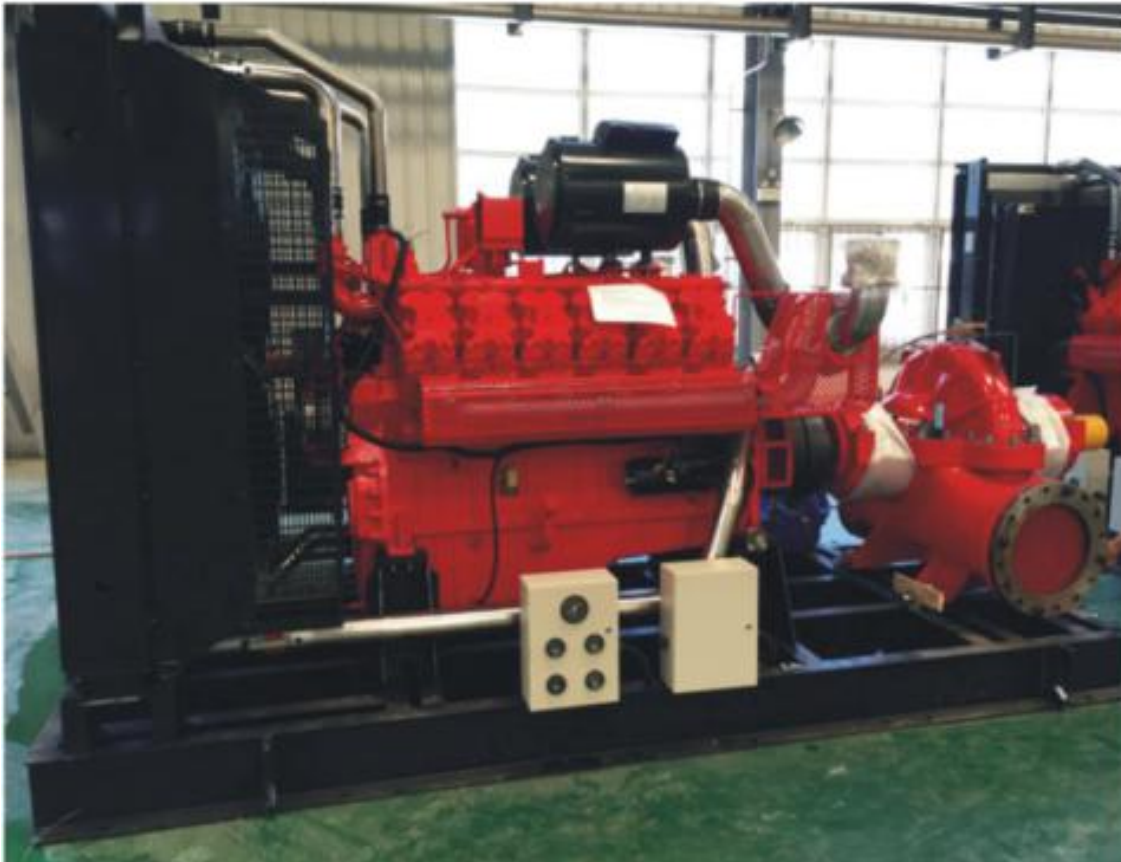


## Diesel Engine Driven Fire Pump



The series can be specially used for the emergency fire control, especially for wind supply and drainage at the unexpected cases there are no ignition or power supply. They are compact structure, complete function, easy maintenance, safe and reliable usage as a new generation diesel engine driven fire pumps featured with higher quality, higher performance, higher reliability. It has a high automation level, humanized simple operation, remote network control and constant voltage fire control, which can effectively protect firemen's personal safety and improve the fire extinguishing efficiency. Its fire system can be timely started when there is a fire or the power supply is cut off. The series can be widely used for petrol, petrochemical, mining, power plants and ports. It is a high quality and super performance fire pump which has been exported to Nigeria, Philippines.

Fire pumps certificates:

CCCF

FIRST-GRADE FIRE ENGINEERING CERTIFICATE

Exported Countries: Nigeria

## Technical parameter list

| 系列号<br>No. | 型号<br>Type  | 性能参数 Performance Data   |                                    |              | 柴油机 Driver |             | 质量<br>Weight<br>(t) |
|------------|-------------|-------------------------|------------------------------------|--------------|------------|-------------|---------------------|
|            |             | 流量<br>Flowrate<br>(L/S) | 出口压力<br>Outlet<br>Pressure<br>(MP) | 轴功率<br>P(KW) | 型号<br>Type | 功率<br>P(KW) |                     |
| 第 1 系列     | XBC5/10-TB  | 10                      | 0.5                                | 10.72        | 495C       | 23.5        | 1.5                 |
|            | XBC8/10-TB  |                         | 0.8                                | 14.50        | 495D1      | 30          | 1.5                 |
|            | XBC10/10-TB |                         | 1.0                                | 21.45        | 495ZD-1    | 36          | 1.5                 |
|            | XBC12/10-TB |                         | 1.2                                | 21.8         | 495ZD-1    | 36          | 1.5                 |
|            | XBC15/10-TB |                         | 1.5                                | 27.76        | 495Q1      | 51.5        | 1.5                 |
|            | XBC18/10-TB |                         | 1.8                                | 33.96        | 495Q1      | 51.5        | 1.5                 |
|            | XBC20/10-TB |                         | 2.0                                | 38.47        | 495Q1      | 51.5        | 1.5                 |
| 第 2 系列     | XBC5/15-TB  | 15                      | 0.5                                | 12.51        | 495C       | 23.5        | 1.5                 |
|            | XBC8/15-TB  |                         | 0.8                                | 19.19        | 495D1      | 30          | 1.5                 |
|            | XBC10/15-TB |                         | 1.0                                | 26.22        | 495ZD-1    | 36          | 1.5                 |
|            | XBC12/15-TB |                         | 1.2                                | 31.60        | 495Y2      | 43          | 1.5                 |
|            | XBC15/15-TB |                         | 1.5                                | 40.13        | K4100K1    | 61.2        | 2                   |
|            | XBC18/15-TB |                         | 1.8                                | 49.05        | LRC4105ZG  | 68          | 2                   |
|            | XBC20/15-TB |                         | 2.0                                | 55.53        | LR4110ZG   | 90          | 2                   |
| 第 3 系列     | XBC5/20-TB  | 20                      | 0.5                                | 15.99        | 495C       | 23.5        | 2                   |
|            | XBC8/20-TB  |                         | 0.8                                | 26.76        | 49512      | 39          | 2                   |
|            | XBC10/20-TB |                         | 1.0                                | 32.42        | K4100K1    | 61.2        | 2                   |
|            | XBC12/20-TB |                         | 1.2                                | 40.23        | K4100K1    | 61.2        | 2                   |
|            | XBC15/20-TB |                         | 1.5                                | 52.05        | LR4110ZG   | 90          | 2.1                 |
|            | XBC18/20-TB |                         | 1.8                                | 62.80        | LR4110ZG   | 90          | 2.1                 |
|            | XBC20/20-TB |                         | 2.0                                | 68.11        | LRC6105G   | 95          | 2.2                 |
| 第 4 系列     | XBC5/30-TB  | 30                      | 0.5                                | 26.63        | 49512      | 39          | 2                   |
|            | XBC8/30-TB  |                         | 0.8                                | 39.58        | K4100K1    | 61.2        | 2.1                 |
|            | XBC10/30-TB |                         | 1.0                                | 49.04        | LR41105ZG  | 70          | 2.1                 |
|            | XBC12/30-TB |                         | 1.2                                | 60.68        | LR4110ZG   | 90          | 2.2                 |
|            | XBC15/30-TB |                         | 1.5                                | 74.83        | LR6105ZG   | 115         | 2.2                 |
|            | XBC18/30-TB |                         | 1.8                                | 89.61        | LR6110ZG   | 132         | 2.2                 |
|            | XBC20/30-TB |                         | 2.0                                | 99.88        | LR6110ZWG  | 150         | 2.2                 |
| 第 5 系列     | XBC5/40-TB  | 40                      | 0.5                                | 36.42        | K4100K1    | 61.2        | 2                   |
|            | XBC8/40-TB  |                         | 0.8                                | 58.33        | LR4110ZG   | 90          | 2.1                 |
|            | XBC10/40-TB |                         | 1.0                                | 64.50        | LR4110ZG   | 90          | 2.1                 |
|            | XBC12/40-TB |                         | 1.2                                | 79.77        | LR6105ZG   | 115         | 2.2                 |
|            | XBC15/40-TB |                         | 1.5                                | 105.17       | LR6110ZWG  | 150         | 2.2                 |
|            | XBC18/40-TB |                         | 1.8                                | 131.82       | X6135ZB    | 210.3       | 3                   |
|            | XBC20/40-TB |                         | 2.0                                | 154.65       | X6135ZB    | 210.3       | 3                   |

| 系列号<br>No. | 型号<br>Type  | 性能参数 Performance Data   |                                    |              | 柴油机 Driver  |             | 质量<br>Weight<br>(t) |
|------------|-------------|-------------------------|------------------------------------|--------------|-------------|-------------|---------------------|
|            |             | 流量<br>Flowrate<br>(L/S) | 出口压力<br>Outlet<br>Pressure<br>(MP) | 轴功率<br>P(KW) | 型号<br>Type  | 功率<br>P(KW) |                     |
| 第 6 系列     | XBC5/50-TB  | 50                      | 0.5                                | 33.78        | 495Q1       | 51.5        | 2                   |
|            | XBC8/50-TB  |                         | 0.8                                | 55.36        | LR4110ZG    | 90          | 2.1                 |
|            | XBC10/50-TB |                         | 1.0                                | 72.24        | LR6105ZG    | 115         | 2.2                 |
|            | XBC12/50-TB |                         | 1.2                                | 89.32        | LR6110ZG    | 132         | 2.2                 |
|            | XBC15/50-TB |                         | 1.5                                | 115.32       | X6315ZB     | 177.9       | 3                   |
|            | XBC18/50-TB |                         | 1.8                                | 142.63       | X6315ZLB    | 210.3       | 3                   |
|            | XBC20/50-TB |                         | 2.0                                | 163.77       | 12V135AB    | 242.6       | 3.3                 |
| 第 7 系列     | XBC6/60-TB  | 60                      | 0.6                                | 53           | LR4105ZG    | 70          | 2.1                 |
|            | XBC8/60-TB  |                         | 0.8                                | 68.6         | LRC6105G    | 95          | 2.2                 |
|            | XBC10/60-TB |                         | 1.0                                | 85.7         | LR6110ZG    | 132         | 2.2                 |
|            | XBC12/60-TB |                         | 1.2                                | 102.9        | LR6110ZWG   | 150         | 2.2                 |
|            | XBC15/60-TB |                         | 1.5                                | 128.6        | X6315ZLB    | 210.3       | 3                   |
|            | XBC18/60-TB |                         | 1.8                                | 154.3        | X6315ZLB    | 210.3       | 3                   |
|            | XBC20/60-TB |                         | 2.0                                | 171.4        | 12V135AB    | 242.6       | 3.3                 |
| 第 8 系列     | XBC5/70-TB  | 70                      | 0.5                                | 50           | LR4105ZG    | 70          | 2.1                 |
|            | XBC8/70-TB  |                         | 0.8                                | 80           | LR6105ZG    | 115         | 2.2                 |
|            | XBC10/70-TB |                         | 1.0                                | 100          | LR6110ZWG   | 150         | 2.2                 |
|            | XBC12/70-TB |                         | 1.2                                | 120          | X6135ZB     | 177.9       | 3                   |
|            | XBC15/70-TB |                         | 1.5                                | 140          | X6315ZLB    | 210.3       | 3                   |
|            | XBC18/70-TB |                         | 1.8                                | 160          | 12V135AB    | 242.6       | 3.3                 |
|            | XBC20/70-TB |                         | 2.0                                | 200          | 12V135JAB   | 307.4       | 3.4                 |
| 第 9 系列     | XBC5/80-TB  | 80                      | 0.5                                | 57.1         | LR4110ZG    | 90          | 2.1                 |
|            | XBC8/80-TB  |                         | 0.8                                | 91.4         | LR6110ZG    | 132         | 2.2                 |
|            | XBC10/80-TB |                         | 1.0                                | 114.3        | X6135ZB     | 177.9       | 3                   |
|            | XBC12/80-TB |                         | 1.2                                | 137.1        | X6315ZLB    | 210.3       | 3                   |
|            | XBC15/80-TB |                         | 1.5                                | 160          | 12V135AB    | 242.6       | 3.3                 |
|            | XBC18/80-TB |                         | 1.8                                | 182.9        | 12V135JAB   | 279.5       | 3.3                 |
|            | XBC20/80-TB |                         | 2.0                                | 228.6        | 12V135AJAB  | 323.6       | 3.4                 |
| 第 10 系列    | XBC5/90-TB  | 90                      | 0.5                                | 64.3         | LR4110ZG    | 90          | 2.1                 |
|            | XBC8/90-TB  |                         | 0.8                                | 102.9        | LR6110ZWG   | 150         | 2.2                 |
|            | XBC10/90-TB |                         | 1.0                                | 128.6        | X6135ZB     | 177.9       | 3                   |
|            | XBC12/90-TB |                         | 1.2                                | 154.3        | X6315ZLB    | 210.3       | 3                   |
|            | XBC15/90-TB |                         | 1.5                                | 192.9        | 12V135AJAB  | 294.2       | 3.4                 |
|            | XBC18/90-TB |                         | 1.8                                | 231.4        | 12V135AJAB  | 323.6       | 3.4                 |
|            | XBC20/90-TB |                         | 2.0                                | 257.1        | W12V135AZLB | 356.4       | 3.5                 |



| 系列号<br>No. | 型号<br>Type   | 性能参数 Performance Data   |                                    |              | 柴油机 Driver  |             | 质量<br>Weight<br>(t) |
|------------|--------------|-------------------------|------------------------------------|--------------|-------------|-------------|---------------------|
|            |              | 流量<br>Flowrate<br>(L/S) | 出口压力<br>Outlet<br>Pressure<br>(MP) | 轴功率<br>P(KW) | 型号<br>Type  | 功率<br>P(KW) |                     |
| 第11系列      | XBC5/100-TB  | 100                     | 0.5                                | 71.4         | LR6105ZG    | 115         | 2.2                 |
|            | XBC8/100-TB  |                         | 0.8                                | 114.4        | X6135ZB     | 177.9       | 3                   |
|            | XBC10/100-TB |                         | 1.0                                | 142.9        | X6135ZLB    | 210.3       | 3                   |
|            | XBC12/100-TB |                         | 1.2                                | 171.4        | 12V135AB    | 242.6       | 3.3                 |
|            | XBC15/100-TB |                         | 1.5                                | 214.3        | 12V135JZB   | 307.4       | 3.4                 |
|            | XBC18/100-TB |                         | 1.8                                | 257.1        | W12V135AZLB | 356.4       | 3.5                 |
|            | XBC20/100-TB |                         | 2.0                                | 285.7        | G6190ZLG-2  | 418         | 6.1                 |
| 第12系列      | XBC5/110-TB  | 110                     | 0.5                                | 78.6         | LR6105ZG    | 115         | 2.2                 |
|            | XBC8/110-TB  |                         | 0.8                                | 125.7        | X6135ZB     | 177.9       | 3                   |
|            | XBC10/110-TB |                         | 1.0                                | 157.1        | X76135ZLB   | 210.3       | 3                   |
|            | XBC12/110-TB |                         | 1.2                                | 188.6        | 12V135JZB   | 279.5       | 3.4                 |
|            | XBC15/110-TB |                         | 1.5                                | 235.7        | 12V135AJZB  | 323.6       | 3.4                 |
|            | XBC18/110-TB |                         | 1.8                                | 282.9        | 6190ZLC     | 450         | 5.6                 |
|            | XBC20/110-TB |                         | 2.0                                | 341.1        | 6190ZLC     | 450         | 5.6                 |
| 第13系列      | XBC7/120-TB  | 120                     | 0.7                                | 120          | X6135ZB     | 177.9       | 3                   |
|            | XBC8/120-TB  |                         | 0.8                                | 137.1        | X6135ZLB    | 210.3       | 3                   |
|            | XBC10/120-TB |                         | 1.0                                | 171.4        | 12V135AB    | 242.6       | 3.3                 |
|            | XBC12/120-TB |                         | 1.2                                | 205.7        | 12V135JZB   | 307.4       | 3.4                 |
|            | XBC15/120-TB |                         | 1.5                                | 257.1        | W12V135AZLB | 356.4       | 3.5                 |
|            | XBC18/120-TB |                         | 1.8                                | 308.6        | B6190ZCA-R  | 400         | 5.6                 |
|            | XBC20/120-TB |                         | 2.0                                | 342.7        | B6190ZCA-R  | 400         | 5.6                 |
| 第14系列      | XBC7/130-TB  | 130                     | 0.7                                | 130          | X6135ZB     | 177.9       | 3                   |
|            | XBC8/130-TB  |                         | 0.8                                | 148.6        | X6135ZLB    | 210.3       | 3                   |
|            | XBC10/130-TB |                         | 1.0                                | 185.7        | 12V135AB    | 242.6       | 3.3                 |
|            | XBC12/130-TB |                         | 1.2                                | 222.9        | 12V135JZB   | 307.4       | 3.4                 |
|            | XBC15/130-TB |                         | 1.5                                | 278.6        | G6190ZLG-2  | 418         | 6.1                 |
|            | XBC18/130-TB |                         | 1.8                                | 334.3        | Z8V190C-1   | 471         | 5.9                 |
|            | XBC20/130-TB |                         | 2.0                                | 371.4        | Z8V190C-1   | 518         | 5.9                 |
| 第15系列      | XBC5/140-TB  | 140                     | 0.5                                | 100          | LR6105ZG    | 132         | 2.2                 |
|            | XBC8/140-TB  |                         | 0.8                                | 160          | X6135ZLB    | 210.3       | 3                   |
|            | XBC10/140-TB |                         | 1.0                                | 200          | 12V135JZB   | 307.4       | 3.4                 |
|            | XBC12/140-TB |                         | 1.2                                | 240          | 12V135AJZB  | 323.6       | 3.4                 |
|            | XBC15/140-TB |                         | 1.5                                | 300          | 6190ZLC     | 450         | 5.6                 |
|            | XBC18/140-TB |                         | 1.8                                | 360          | 8190ZLCZ-2R | 500         | 6.8                 |
|            | XBC20/140-TB |                         | 2.0                                | 400          | G6190ZLC    | 540         | 6.1                 |

| 系列号<br>No. | 型号<br>Type   | 性能参数 Performance Data   |                                    |              | 柴油机 Driver   |             | 质量<br>Weight<br>(t) |
|------------|--------------|-------------------------|------------------------------------|--------------|--------------|-------------|---------------------|
|            |              | 流量<br>Flowrate<br>(L/S) | 出口压力<br>Outlet<br>Pressure<br>(MP) | 轴功率<br>P(KW) | 型号<br>Type   | 功率<br>P(KW) |                     |
| 第16系列      | XBC5/150-TB  | 150                     | 0.5                                | 107.1        | LR6110ZWG    | 150         | 2.2                 |
|            | XBC8/150-TB  |                         | 0.8                                | 171.4        | 12V135AB     | 242.6       | 3.3                 |
|            | XBC10/150-TB |                         | 1.0                                | 214.1        | 12V135JZB    | 307.6       | 3.4                 |
|            | XBC12/150-TB |                         | 1.2                                | 257.1        | W12V135AZLB  | 356.4       | 3.5                 |
|            | XBC15/150-TB |                         | 1.5                                | 321.4        | 6190ZLC      | 450         | 5.6                 |
|            | XBC18/150-TB |                         | 1.8                                | 385.7        | Z12V190BC2-2 | 560         | 6.9                 |
|            | XBC20/150-TB |                         | 2.0                                | 428.6        | 8190ZLCZ-1R  | 600         | 6.9                 |
| 第17系列      | XBC5/160-TB  | 160                     | 0.5                                | 114.3        | X6135ZB      | 177.9       | 3                   |
|            | XBC8/160-TB  |                         | 0.8                                | 182.9        | 12V135JZB    | 279.5       | 3.4                 |
|            | XBC10/160-TB |                         | 1.0                                | 228.6        | 6190ZLC      | 330         | 5.6                 |
|            | XBC12/160-TB |                         | 1.2                                | 274.3        | G6190ZLG-2   | 380         | 6.1                 |
|            | XBC15/160-TB |                         | 1.5                                | 342.9        | Z8V190C-1    | 471         | 6                   |
|            | XBC18/160-TB |                         | 1.8                                | 411.4        | Z12V190BC2-2 | 560         | 6.9                 |
|            | XBC20/160-TB |                         | 2.0                                | 457.1        | Z12V190BC7-1 | 662         | 6.9                 |
| 第18系列      | XBC5/170-TB  | 170                     | 0.5                                | 121.4        | X6135ZLB     | 191.2       | 3                   |
|            | XBC8/170-TB  |                         | 0.8                                | 194.3        | 12V135AJZB   | 294.2       | 3.5                 |
|            | XBC10/170-TB |                         | 1.0                                | 242.9        | 4190ZLC-3    | 330         | 4.6                 |
|            | XBC12/170-TB |                         | 1.2                                | 291.4        | G6190ZLC2-2  | 418         | 6.1                 |
|            | XBC15/170-TB |                         | 1.5                                | 364.3        | Z8V190C-1    | 518         | 6                   |
|            | XBC18/170-TB |                         | 1.8                                | 437.1        | 8190ZLCZ-1R  | 600         | 6.8                 |
|            | XBC20/170-TB |                         | 2.0                                | 485.7        | 8190ZLC-3    | 650         | 6.8                 |
| 第19系列      | XBC5/180-TB  | 180                     | 0.5                                | 126.12       | 4190ZLC1-2   | 180         | 4.5                 |
|            | XBC8/180-TB  |                         | 0.8                                | 201.80       | 6190ZLCA-2   | 300         | 5.56                |
|            | XBC10/180-TB |                         | 1.0                                | 252.25       | 6190ZLCA-3   | 360         | 5.56                |
|            | XBC12/180-TB |                         | 1.2                                | 302.70       | 6190ZLC      | 450         | 5.56                |
|            | XBC15/180-TB |                         | 1.5                                | 378.38       | Z12V190BC2-2 | 560         | 6.9                 |
|            | XBC18/180-TB |                         | 1.8                                | 454.06       | G12V190ZL-2  | 650         | 7.1                 |
| 第20系列      | XBC6/190-TB  | 190                     | 0.6                                | 159.79       | 4190ZLC-1    | 270         | 4.5                 |
|            | XBC8/190-TB  |                         | 0.8                                | 213.01       | 6190ZLCA-2   | 300         | 5.56                |
|            | XBC10/190-TB |                         | 1.0                                | 266.24       | G6190ZLC-2   | 380         | 6.1                 |
|            | XBC12/190-TB |                         | 1.2                                | 319.52       | 8190ZLC-2    | 500         | 6.8                 |
|            | XBC15/190-TB |                         | 1.5                                | 399.41       | Z12V190BC2-2 | 560         | 6.9                 |
|            | XBC18/190-TB |                         | 1.8                                | 479.86       | 8190ZLC      | 720         | 7                   |
| 第21系列      | XBC5/200-TB  | 200                     | 0.6                                | 159.79       | 4190ZLC-1    | 270         | 4.5                 |
|            | XBC8/200-TB  |                         | 0.8                                | 213.01       | 6190ZLCA-1   | 330         | 5.46                |
|            | XBC10/200-TB |                         | 1.0                                | 266.24       | 6190ZLC-1    | 400         | 5.56                |
|            | XBC12/200-TB |                         | 1.2                                | 319.52       | G6190ZLC-3   | 480         | 6.1                 |
|            | XBC15/200-TB |                         | 1.5                                | 399.41       | G12V190PZL-2 | 600         | 9.7                 |

| 系列号<br>No. | 型号<br>Type   | 性能参数 Performance Data   |                                    |              | 柴油机 Driver   |             | 质量<br>Weight<br>(t) |
|------------|--------------|-------------------------|------------------------------------|--------------|--------------|-------------|---------------------|
|            |              | 流量<br>Flowrate<br>(L/S) | 出口压力<br>Outlet<br>Pressure<br>(MP) | 轴功率<br>P(KW) | 型号<br>Type   | 功率<br>P(KW) |                     |
| 第22系列      | XBC6/220-TB  | 220                     | 0.6                                | 184.96       | 4190ZLC-1    | 270         | 5.46                |
|            | XBC8/220-TB  |                         | 0.8                                | 246.14       | 6190ZLCA-3   | 360         | 5.46                |
|            | XBC10/220-TB |                         | 1.0                                | 308.43       | 6190ZLC      | 450         | 5.56                |
|            | XBC12/220-TB |                         | 1.2                                | 369.91       | Z12V190BC2-2 | 560         | 6.9                 |
|            | XBC15/220-TB |                         | 1.5                                | 462.44       | G12V190ZL-2  | 650         | 6.9                 |
| 第23系列      | XBC6/250-TB  | 250                     | 0.6                                | 210.23       | 6190ZLCA-2   | 300         | 5.46                |
|            | XBC8/250-TB  |                         | 0.8                                | 280.27       | 6190ZLC-1    | 400         | 5.56                |
|            | XBC10/250-TB |                         | 1.0                                | 350.31       | 8190ZLC-2    | 500         | 6.8                 |
|            | XBC12/250-TB |                         | 1.2                                | 420.46       | G12V190PZL-2 | 600         | 9.7                 |
|            | XBC15/250-TB |                         | 1.5                                | 525.57       | G12V190PZL-1 | 740         | 9.7                 |
| 第24系列      | XBC6/280-TB  | 280                     | 0.6                                | 235.44       | 190ZLCA-3    | 360         | 5.46                |
|            | XBC8/280-TB  |                         | 0.8                                | 313.92       | 8190ZLC-2    | 500         | 6.7                 |
|            | XBC10/280-TB |                         | 1.0                                | 392.44       | Z12V190BC2-2 | 560         | 6.9                 |
|            | XBC12/280-TB |                         | 1.2                                | 470.88       | 8190ZLC      | 720         | 6.8                 |
|            | XBC15/280-TB |                         | 1.5                                | 588.6        | G12V190PZL   | 900         | 9.7                 |
| 第25系列      | XBC6/300-TB  | 300                     | 0.6                                | 252.21       | G6190ZLC-2   | 380         | 6.1                 |
|            | XBC8/300-TB  |                         | 0.8                                | 336.39       | 8190ZLC-2    | 500         | 6.8                 |
|            | XBC10/300-TB |                         | 1.0                                | 420.46       | G12V190PZL-2 | 600         | 9.8                 |
|            | XBC12/300-TB |                         | 1.2                                | 504.53       | 8190ZLC      | 720         | 6.9                 |
|            | XBC15/300-TB |                         | 1.5                                | 630.69       | G12V190PZL   | 900         | 9.8                 |
| 第26系列      | XBC6/320-TB  | 320                     | 0.6                                | 269.03       | 6190ZLC-1    | 400         | 5.56                |
|            | XBC8/320-TB  |                         | 0.8                                | 358.77       | Z12V190BC2-2 | 560         | 6.9                 |
|            | XBC10/320-TB |                         | 1.0                                | 448.41       | G12V190ZL-2  | 650         | 7                   |
|            | XBC12/320-TB |                         | 1.2                                | 538.16       | G12V190ZL-1  | 800         | 7                   |
|            | XBC15/320-TB |                         | 1.5                                | 672.67       | A12V190ZL-2  | 960         | 11.1                |
| 第27系列      | XBC6/350-TB  | 350                     | 0.6                                | 294.3        | 6190ZLC      | 450         | 5.56                |
|            | XBC8/350-TB  |                         | 0.8                                | 392.4        | Z12V190BC2-2 | 560         | 6.9                 |
|            | XBC10/350-TB |                         | 1.0                                | 490.5        | G12V190PZL-1 | 740         | 9.7                 |
|            | XBC12/350-TB |                         | 1.2                                | 588.6        | G12V190PZL   | 900         | 9.9                 |
|            | XBC15/350-TB |                         | 1.5                                | 735.75       | A12V190ZL-3  | 1100        | 11.1                |
| 第28系列      | XBC6/380-TB  | 380                     | 0.6                                | 319.57       | 6190ZLC      | 450         | 5.56                |
|            | XBC8/380-TB  |                         | 0.8                                | 426.03       | G12V190PZL-2 | 600         | 9.7                 |
|            | XBC10/380-TB |                         | 1.0                                | 532.29       | G12V190ZL-1  | 800         | 7.1                 |
|            | XBC12/380-TB |                         | 1.2                                | 639.04       | G12V190PZL   | 900         | 9.9                 |
|            | XBC15/380-TB |                         | 1.5                                | 798.43       | A12V190ZL    | 1200        | 11.1                |



| 系列号<br>No. | 型号<br>Type   | 性能参数 Performance Data   |                                    |              | 柴油机 Driver   |             | 质量<br>Weight<br>(t) |
|------------|--------------|-------------------------|------------------------------------|--------------|--------------|-------------|---------------------|
|            |              | 流量<br>Flowrate<br>(L/S) | 出口压力<br>Outlet<br>Pressure<br>(MP) | 轴功率<br>P(KW) | 型号<br>Type   | 功率<br>P(KW) |                     |
| 第29系列      | XBC6/400-TB  | 400                     | 0.6                                | 336.39       | B190ZLC      | 500         | 6.9                 |
|            | XBC8/400-TB  |                         | 0.8                                | 448.41       | G12V190ZL-2  | 650         | 7                   |
|            | XBC10/400-TB |                         | 1.0                                | 560.54       | G12V190ZL-1  | 800         | 7.2                 |
|            | XBC12/400-TB |                         | 1.2                                | 672.67       | A12V190ZL-1  | 960         | 11.2                |
|            | XBC15/400-TB |                         | 1.5                                | 840.81       | A12V190ZL    | 1200        | 11.2                |
| 第30系列      | XBC6/450-TB  | 450                     | 0.6                                | 378.57       | Z12V190BC2-2 | 560         | 7                   |
|            | XBC8/450-TB  |                         | 0.8                                | 504.53       | G12V190PZL-1 | 740         | 9.8                 |
|            | XBC10/450-TB |                         | 1.0                                | 630.69       | G12V190PZL   | 900         | 10                  |
|            | XBC12/450-TB |                         | 1.2                                | 756.14       | A12V190ZL-3  | 1100        | 11.2                |
|            | XBC15/450-TB |                         | 1.5                                | 945.93       | H12V190ZL-1  | 1400        | 11.4                |
| 第31系列      | XBC6/500-TB  | 500                     | 0.6                                | 420.46       | G12V190PZL-2 | 600         | 9.9                 |
|            | XBC8/500-TB  |                         | 0.8                                | 560.54       | G12V190ZL-1  | 800         | 7.1                 |
|            | XBC10/500-TB |                         | 1.0                                | 700.73       | G12V190ZL    | 1000        | 7.2                 |
|            | XBC12/500-TB |                         | 1.2                                | 840.81       | A12V190ZL    | 1200        | 11.2                |
|            | XBC15/500-TB |                         | 1.5                                | 1051.01      | H12V190ZL-3  | 1500        | 11.5                |
| 第32系列      | XBC6/550-TB  | 550                     | 0.6                                | 462.14       | G12V190ZL-2  | 650         | 7                   |
|            | XBC8/550-TB  |                         | 0.8                                | 616.66       | G12V190PZL   | 900         | 9.8                 |
|            | XBC10/550-TB |                         | 1.0                                | 770.77       | A12V190ZL-3  | 1100        | 11.3                |
| 第33系列      | XBC6/550-TB  | 600                     | 0.6                                | 504.53       | G12V190PZL-1 | 740         | 9.8                 |
|            | XBC8/550-TB  |                         | 0.8                                | 672.67       | A12V190ZL-1  | 960         | 11                  |
|            | XBC10/550-TB |                         | 1.0                                | 840.81       | A12V190ZL    | 1200        | 11.3                |
| 第34系列      | XBC6/550-TB  | 650                     | 0.6                                | 546.51       | G12V190ZL-1  | 800         | 7                   |
|            | XBC8/550-TB  |                         | 0.8                                | 728.79       | A12V190ZL-3  | 1100        | 11                  |
|            | XBC10/550-TB |                         | 1.0                                | 910.96       | H12V190ZL-1  | 1400        | 11.5                |
| 第35系列      | XBC6/550-TB  | 700                     | 0.6                                | 588.6        | G12V190PZL   | 900         | 9.8                 |
|            | XBC8/550-TB  |                         | 0.8                                | 784.8        | A12V190ZL-3  | 1100        | 11                  |
|            | XBC10/550-TB |                         | 1.0                                | 981          | H12V190ZL-1  | 1400        | 11.5                |
| 第36系列      | XBC6/550-TB  | 750                     | 0.6                                | 630.69       | G12V190ZL    | 900         | 9.8                 |
|            | XBC8/550-TB  |                         | 0.8                                | 840.71       | A12V190ZL    | 1200        | 11                  |
|            | XBC10/550-TB |                         | 1.0                                | 1051.01      | H12V190ZL-3  | 1500        | 11.5                |
| 第37系列      | XBC6/550-TB  | 800                     | 0.6                                | 672.67       | A12V190ZL-3  | 960         | 11                  |
|            | XBC8/550-TB  |                         | 0.8                                | 896.93       | H12V190ZL-1  | 1400        | 11.2                |
|            | XBC10/550-TB |                         | 1.0                                | 1121.13      | H12V190ZL    | 1740        | 11.5                |
| 第38系列      | XBC6/550-TB  | 850                     | 0.6                                | 714.76       | A12V190ZL-3  | 1100        | 11                  |
|            | XBC8/550-TB  |                         | 0.8                                | 952.94       | H12V190ZL-1  | 1400        | 11.2                |
|            | XBC10/550-TB |                         | 1.0                                | 1191.24      | H12V190ZL    | 1740        | 11.5                |
| 第39系列      | XBC6/550-TB  | 900                     | 0.6                                | 756.74       | A12V190ZL-3  | 1100        | 11                  |
|            | XBC8/550-TB  |                         | 0.8                                | 1009.09      | H12V190ZL-3  | 1500        | 11.2                |
|            | XBC10/550-TB |                         | 1.0                                | 1261.26      | H12V190ZL    | 1740        | 11.5                |

## Vehicle fire pump



Certificate: CCCF

Exported area: Russia



## Technical Parameter List

| 项目<br>performance<br><br>型号<br>Model                   |                  | 低压工况<br>Normal pressure functions |            |            |           | 高(中)压工况<br>High/normal pressure functions |            |            |           | 高(中)低压联合工况<br>High/middle/normal pressure functions |            |             |                   |            |           | 引水<br>时间<br>Priming<br>water<br>time<br>(S) | 重量<br>Weight<br>(kg) |
|--|------------------|-----------------------------------|------------|------------|-----------|---|------------|------------|-----------|---|------------|-------------|-------------------|------------|-----------|---|----------------------|
|  |                  | 流量                                | 出口<br>压力   | 泵转速        | 功率        | 流量  | 出口<br>压力   | 泵转速        | 功率        | 低压<br>流量  | 低压出<br>口压力 | 高(中)<br>压流量 | 高(中)<br>压出口<br>压力 | 泵转速        | 功率        |   |                      |
|  |                  | Q<br>(l/s)                        | P<br>(Mpa) | n<br>(rpm) | N<br>(kW) | Q<br>(l/s)                                | P<br>(Mpa) | n<br>(rpm) | N<br>(kW) | Q<br>(l/s)  | P<br>(Mpa) | Q<br>(l/s)  | P<br>(Mpa)        | n<br>(rpm) | N<br>(kW) |   |                      |
| 高低压<br>消防泵<br>High/normal<br>pressure<br>fire pump     | CB40.10/6.30-TB  | 30                                | 1.0        | 4250       | ≤66       | 6   | 4.0        | 3890       | ≤78       | 15  | 1.0        | 6           | 4.0               | 3860       | ≤86       | 17  | 145                  |
|  | CB40.10/6.50-TB  | 50                                | 1.0        | 4370       | ≤95       | 6   | 4.0        | 4100       | ≤100      | 25  | 1.75       | 6           | 3.5               | 5200       | ≤135      | 25  | 165                  |
|  | CB40.12/25.80-TB | 80                                | 1.2        | 4770       | ≤210      | 25  | 4.0        | 4340       | ≤225      | 40  | 1.2        | 20          | 4.0               | 4334       | ≤225      | 73  | 310                  |
| 中低压<br>消防泵<br>Middle/normal<br>pressure<br>fire pump   | CB20.10/15.30-TB | 30                                | 1.0        | 4210       | ≤67       | 15  | 2.0        | 4317       | ≤69       | 15  | 1.0        | 15          | 2.0               | 4224       | ≤84       | 25.4  | 160                  |
|  | CB20.10/20.40-TB | 40                                | 1.0        | 4430       | ≤88       | 20  | 2.0        | 4270       | ≤88       | 20  | 1.0        | 20          | 2.0               | 4260       | ≤90       | 25.4  | 160                  |
|  | CB20.10/25.50-TB | 50                                | 1.0        | 4400       | ≤104      | 25  | 2.0        | 4400       | ≤112      | 25  | 1.0        | 25          | 2.0               | 4400       | ≤120      | 26.4  | 182                  |
|  | CB20.10/30.60-TB | 60                                | 1.0        | 4625       | ≤128      | 30  | 2.0        | 4680       | ≤145      | 30  | 1.0        | 30          | 2.0               | 4565       | ≤124      | 26.4  | 182                  |
|  | CB20.10/35.70-TB | 70                                | 1.0        | 4760       | ≤154      | 35  | 2.0        | 4330       | ≤138      | 35  | 1.0        | 35          | 2.0               | 4500       | ≤145      | 30.4  | 190                  |
|  | CB20.10/40.80-TB | 80                                | 1.0        | 3760       | ≤155      | 40  | 2.0        | 3690       | ≤167      | 40  | 1.0        | 30          | 2.0               | 3520       | ≤160      | 50  | 285                  |
| 中(低)压<br>消防泵<br>Middle normal<br>pressure<br>fire pump | CB20/80-TB       | 60                                | 1.2        | 3020       | ≤105      | 80  | 2.0        | 3885       | ≤223      |   |            |             |                   |            |           | 76  | 175                  |
|  | CB18/50-TB       | 50                                | 1.0        | 4300       | ≤75       | 50  | 1.8        | 5680       | ≤156      |   |            |             |                   |            |           | 26.4  | 125                  |
|  | CB18/40-TB       | 40                                | 1.0        | 4300       | ≤62       | 40  | 1.8        | 5488       | ≤122      |   |            |             |                   |            |           | 25.4  | 100                  |
|  | CB18/15-TB       | 30                                | 1.0        | 4350       | ≤60       | 15  | 1.8        | 5150       | ≤77       |   |            |             |                   |            |           | 17  | 120                  |
|  | CB16/30-TB       | 40                                | 1.0        | 4300       | ≤62       | 30  | 1.6        | 4900       | ≤70       |   |            |             |                   |            |           | 25  | 100                  |
|  | CB12/60-TB       | 60                                | 1.2        | 4950       | ≤116      | 50  | 1.8        | 5560       | ≤140      |   |            |             |                   |            |           | 26.4  | 143                  |
|  | CB12/80-TB       | 80                                | 1.2        | 4020       | ≤160      |   |            |            |           |   |            |             |                   |            |           | 50  | 233                  |
|  | CB10/100-TB      | 100                               | 1.0        | 4130       | ≤187      | 70  | 1.3        | 4000       | ≤170      |   |            |             |                   |            |           | 50  | 233                  |
|  | CB12/130-TB      | 130                               | 1.2        | 2925       | ≤237      | 91  | 1.56       | 3062       | ≤242      |   |            |             |                   |            |           | 56  | 270                  |
| CB10/170-TB  | 170              | 1.0                               | 2860       | ≤237       |           |   |            |            |           |   |            |             |                   |            | 79        | 410   |                      |

1、泵输入转速可根据用户需要，用泵所带增速箱来调节，可选用的增速比有三组；

1) 70L/s以下：34/27、37/24、40/21、42/19、44/17

2) 80-100L/s：37/31、41/27、47/21、43/25、45/23

3) 120-150L/s：45/41、59/27、57/29、49/37、53/33

2、CB18/15-TB为单级中压泵，可用调节转速来实现低压功能；

3、CB18/50-TB为单级中压泵，用来调节转速来调节压力，泵转速由4300r/m变化至5680r/m，则压力从1.0MPa变化至1.8MPa；

4、以上参数试验条件：吸深3m，吸水管长5m，吸水管径：

CB40.10/6.30-TB、CB18/15-TB为Φ110，CB2.10/15.30-TB、CB20.10/20.40-TB、CB18/40-TB为Φ125。

CB20.10/25.15-TB、CB20.10/30.60-TB、CB20.10/35.70-TB、CB18/50-TB、CB12/60-TB为Φ132。

CB40.12/25.80-TB、CB20.10/40.80-TB、CB20/80-TB、CB12/80-TB、CB14/70-TB、CB10/100-TB为Φ150。

CB10/130-TB为Φ250 CB10/170-TB为两根Φ200、CB40.12/25.80-TB为Φ200。

1、The input rotational speed of the pump can be adjusted with the gear box in rear of the pump, the optional gear rate;

1) 70L/s up: 34/27, 37/24, 40/21, 42/19, 44/17

2) 80-100L/s: 37/31, 41/27, 47/21, 43/25, 45/23

3) 120-150L/s: 45/41, 59/27, 57/29, 49/37, 53/33

2、CB18/15-TB is a single stage middle pressure pump, the normal pressure function can be achieved by adjusting the rotational speed of the pump.

3、CB18/50-TB is a single stage middle pressure pump, the normal pressure function can be achieved by adjusting the rotational speed of the pump. The rotational speed of the pump change from 4300 rpm to 5680rpm, and the pressure change from 1.0 Mpa to 1.8 Mpa.

4、the above parameter test condition: suction deep 3m, suction pipe length 5m, suction pipe diameter:

CB40.10/6.30-TB, CB18/15-TB is Φ110, CB2.10/15.30-TB, CB20.10/20.40-TB, CB18/40-TB is Φ125.

CB20.10/25.15-TB, CB20.10/30.60-TB, CB20.10/35.70-TB, CB18/50-TB, CB12/60-TB is Φ132.

CB40.12/25.80-TB, CB20.10/40.80-TB, CB20/80-TB, CB12/80-TB, CB14/70-TB, CB10/100-TB is Φ150.

CB10/130-TB is Φ250 CB10/170-TB is two root Φ200, CB40.12/25.80-TB is Φ200.